



+ Powered by  **SUMMIT K12**



**MONEY BACK  
GUARANTEE**

All MLL students will gain at least one proficiency level per year!\*

# CONNECT TO LITERACY™

## ENGLISH LANGUAGE DEVELOPMENT SOLUTIONS

- Empower all multilingual learners (MLLs) to grow at least one proficiency level per year
- Accelerate reclassification of MLLs including long-term ELs
- Support every newcomer student with Language Foundation Skills and support of over 30 home languages

\*For full details visit [summitk12.com/guarantee-information](https://summitk12.com/guarantee-information)

- ✓ Easy
- ✓ Efficient
- ✓ Effective

## TABLE OF CONTENTS

About Us .....	<b>3</b>
Connect to Literacy Overview .....	<b>4</b>
Progress Monitoring Assessments and Personalized Learning Plans .....	<b>5</b>
Year-Round ELD and TELPAS Readiness .....	<b>6</b>
Interpretive Mode Items .....	<b>6</b>
Expressive Mode Items .....	<b>7</b>
AI Auto-Scoring for Speaking and Writing .....	<b>7</b>
Language Foundational Skills Created Through a Multilingual Lens .....	<b>10</b>
Real-Time, Data-Rich Reports .....	<b>12</b>
Newcomer Resources and Supports .....	<b>14</b>
Student ELD Progress Reports .....	<b>15</b>
Student, Teacher, and Admin Dashboards .....	<b>16</b>
Professional Learning for Educators, Leaders, and Families of Multilingual Learners .....	<b>18</b>
Customer Support and Integrations .....	<b>19</b>



# ABOUT US

## SUMMIT K12

Summit K12 was founded on the belief that every student can succeed in school if we tailor instruction to their unique learning needs and encourage them to reach their summit.

Our online curriculum solutions empower teachers to differentiate instruction, monitor progress, and support every learner's journey toward success.

## PROVEN PARTNER FOR ELD

Not only do we guarantee results, we have the numbers to prove it. 96% of district partners choose to renew with Summit K12 after experiencing how we can support their proficiency growth, reclassification goals, and newcomer students.



To view the latest data and case studies, visit [summitk12.com/results](https://summitk12.com/results) or scan the QR code.

**750+** DISTRICTS

**4,000+** K-12 SCHOOLS

**100,000+** BILINGUAL/ESL TEACHERS

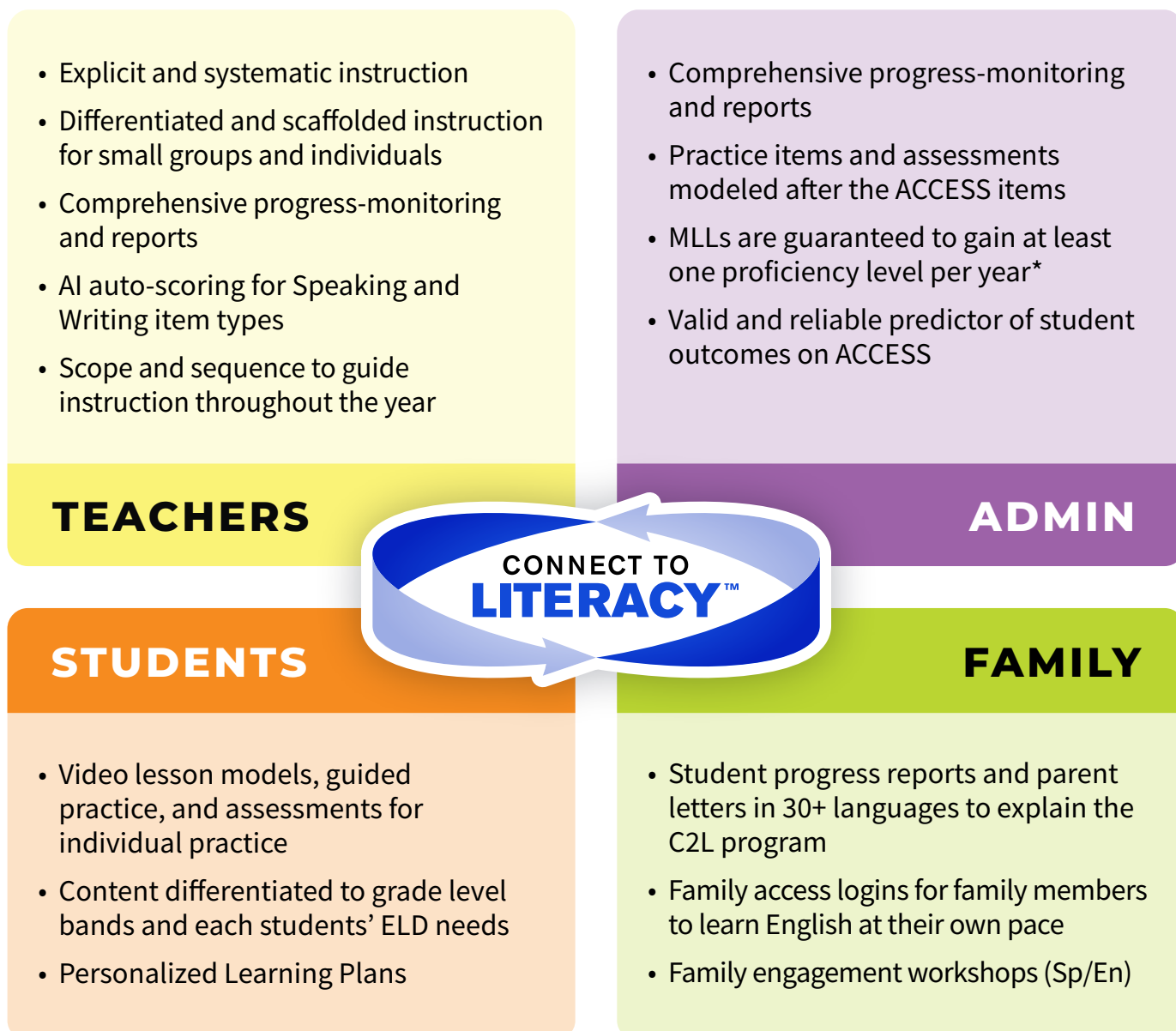
**750,000+** MULTILINGUAL STUDENTS

## CONNECT TO LITERACY

Connect to Literacy (C2L) is a cutting-edge solution designed to enhance English language proficiency by leveraging the strengths of an online curriculum. Tailored specifically to meet the rigor and requirements of the WIDA™ 2020 Framework, C2L provides students with targeted lessons, practice and formative assessments modeled after the ACCESS items, ensuring students receive research and evidence-based English Language Development year-round.

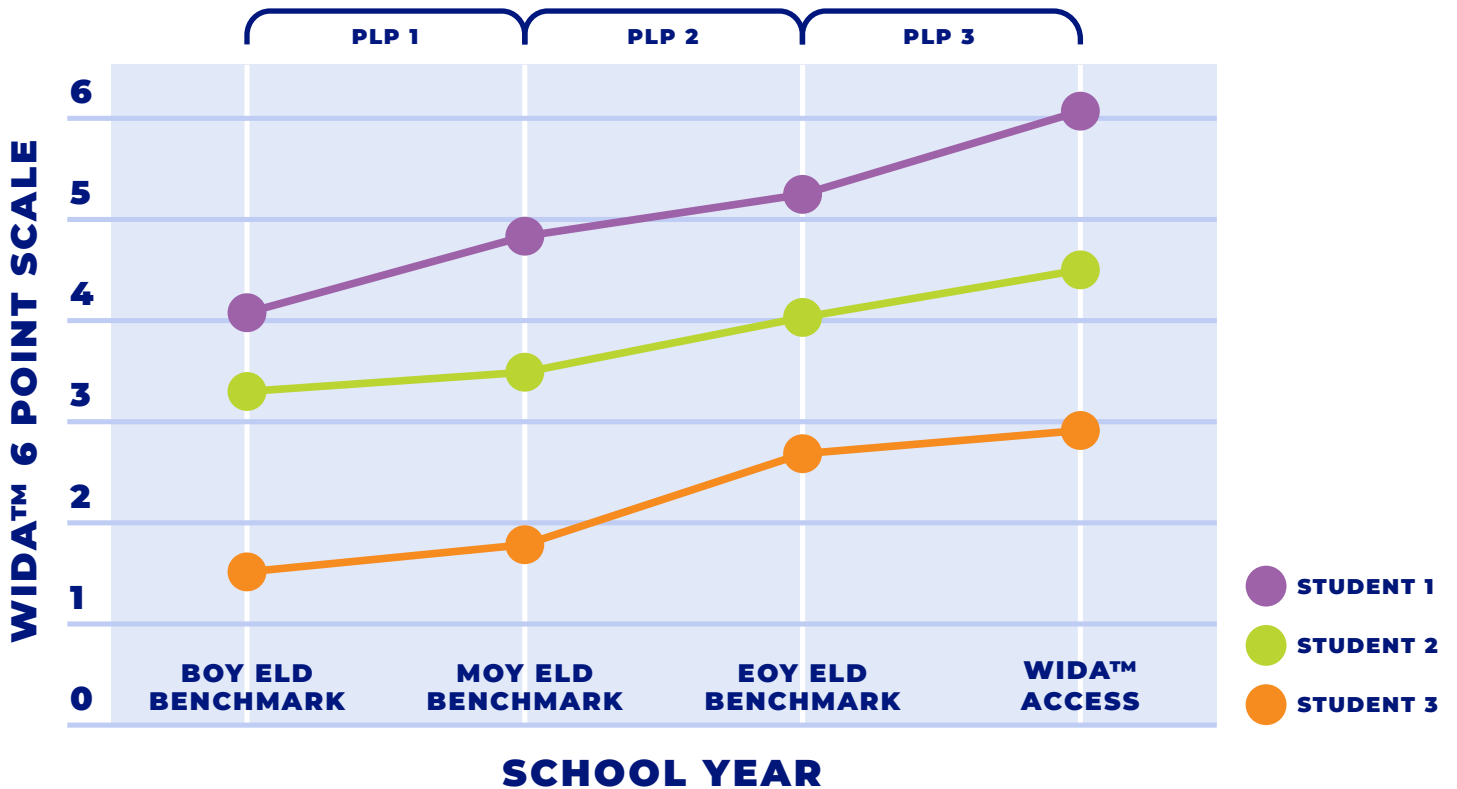
A supportive online environment designed to fast-track English language learning, aid in vocabulary mastery and accelerate speaking, listening, reading, and writing development.

### Summit K12 guarantees that all MLL students will gain at least one proficiency level per year!\*



### 3 PROGRESS MONITORING ELD BENCHMARKS

Success with C2L is centered around the 3 ELD Progress Monitoring Benchmarks students take throughout the year which generate 3 corresponding Personalized Learning Plans (PLPs) and class grouping reports.



Item	PLP 1	PLP 2	PLP 3	Overall
Item 1	✓	✓	✓	68%
Item 2	✓	✓	✓	73%

Item	PLP 1	PLP 2	PLP 3	PLP 4	PLP 5	PLP 6
Item 1	1.4	1.68	2.67	2.95	3.20	3.62
Item 2	1.95	3.33	2.35	3.41	3.59	4.12

Item	PLP 1	PLP 2	PLP 3	Overall
Item 1	✓	✓	✓	80%
Item 2	✓	✓	✓	87%

Item	PLP 1	PLP 2	PLP 3	PLP 4	PLP 5	PLP 6
Item 1	3.51	3.49	3.87	4.03		
Item 2						
Item 3						

### PERSONALIZED LEARNING PLANS

The PLPs are divided into four domains: listening, speaking, reading, and writing. Each PLP is designed to focus on the specific concepts and skills that each student needs the most. Students can progress through their PLP assignments at their own pace.

#### Each PLP contains:

- Video lesson models, guided practice, assessments and model exemplars
- Scaffolded and linguistically accommodated instruction
- AI auto-scoring for Speaking and Writing item types
- Comprehensive progress-monitoring and reports for teachers

# YEAR-ROUND ELD AND ACCESS READINESS

C2L’s content is aligned to the WIDA™ ELD Standards Framework consisting of four components: ELD Standards, Key Language Uses, Language Expectations, and Proficiency Level Descriptors.

Through accounting for all of these components and the three difficulty tiers, C2L’s program contains more than 1,400 unique items leveled to all WIDA™ grade-level clusters: K, 1, 2-3, 4-5, 6-8, and 9-12.

## INTERPRETIVE MODE ITEMS

Listening Skills Key Uses		Learn	ELD Standard 1: Social Language				
			ELD Standard 1 Social	ELD Standard 2 ELAR	ELD Standard 3 Math	ELD Standard 4 Science	ELD Standard 5 Social Studies
 <b>NARRATE</b>	Tier A	⊙ Start	⊙ Start	⊙ Start	⊙ Start	⊙ Start	⊙ Start
	Tier B		⊙ Start	⊙ Start	⊙ Start	⊙ Start	⊙ Start
	Tier C		⊙ Start	⊙ Start	⊙ Start	⊙ Start	⊙ Start
 <b>INFORM</b>	Tier A	⊙ Start	⊙ Start	⊙ Start	⊙ Start	⊙ Start	⊙ Start
	Tier B		⊙ Start	⊙ Start	⊙ Start	⊙ Start	⊙ Start
	Tier C		⊙ Start	⊙ Start	⊙ Start	⊙ Start	⊙ Start
 <b>EXPLAIN</b>	Tier A	⊙ Start	⊙ Start	⊙ Start	⊙ Start	⊙ Start	⊙ Start
	Tier B		⊙ Start	⊙ Start	⊙ Start	⊙ Start	⊙ Start
	Tier C		⊙ Start	⊙ Start	⊙ Start	⊙ Start	⊙ Start
 <b>ARGUE</b>	Tier A	⊙ Start	⊙ Start	⊙ Start	⊙ Start	⊙ Start	⊙ Start
	Tier B		⊙ Start	⊙ Start	⊙ Start	⊙ Start	⊙ Start
	Tier C		⊙ Start	⊙ Start	⊙ Start	⊙ Start	⊙ Start

## READING EXAMPLE

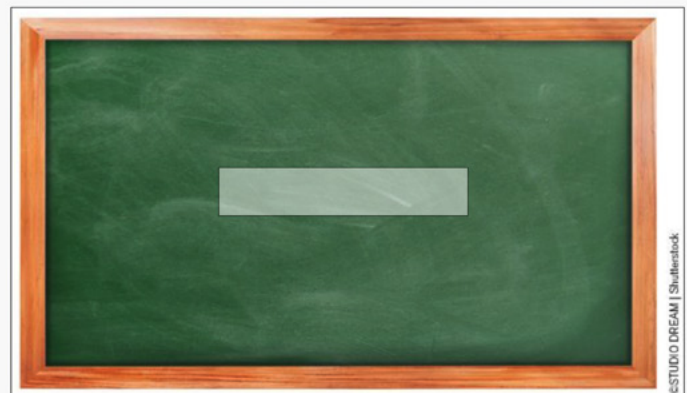
### Becoming a Teacher

Teaching is a great job for people who love to learn and share what they know with others. If you are thinking about becoming a teacher, you need to work hard in school. Do your best to get good grades because you have to go to college to be a teacher. But even if your grades aren't perfect or there are some classes you don't like, keep going. All of your hard work will be worth it.



What is one thing you have to do to become a teacher?

You will move the correct answer into the box.



- get bad grades
- go to the park
- get perfect grades
- go to college

## LISTENING EXAMPLE

### Watching Soccer



©Romain Bland | Shutterstock



- Her favorite player played for less than half of the game.
- Sofia's family did not want to watch the game with her.
- Sofia's favorite player did not play well in the game.

## LISTENING EXAMPLE

### A New Year



©Pheemaster | Shutterstock



- dancing at a festival
- cooking a large meal
- jumping over a fire

## READING EXAMPLE

### Robots

A robot is a machine. It does jobs like a human. It may not look like a human. But it can do work humans do. Some robots do very simple things. A robot can clean your floor. They can also do difficult things. A robot may build a car. I think robots make work easier.



What is a robot?

You will move the correct answer into the box.



©GANS | Shutterstock



©Tweeter | Shutterstock

- |           |          |
|-----------|----------|
| a plant   | a window |
| a machine | a car    |

# EXPRESSIVE MODE ITEMS

Writing Skills Key Uses		Learn	ELD Standard 1: Social Language				
			ELD Standard 1 Social	ELD Standard 2 ELAR	ELD Standard 3 Math	ELD Standard 4 Science	ELD Standard 5 Social Studies
<b>NARRATE</b>	Tier A	⓪ Start	⓪ Start	⓪ Start	⓪ Start	⓪ Start	⓪ Start
	Tier B/C		⓪ Start	⓪ Start	⓪ Start	⓪ Start	⓪ Start
<b>INFORM</b>	Tier A	⓪ Start	⓪ Start	⓪ Start	⓪ Start	⓪ Start	⓪ Start
	Tier B/C		⓪ Start	⓪ Start	⓪ Start	⓪ Start	⓪ Start
<b>EXPLAIN</b>	Tier A	⓪ Start	⓪ Start	⓪ Start	⓪ Start	⓪ Start	⓪ Start
	Tier B/C		⓪ Start	⓪ Start	⓪ Start	⓪ Start	⓪ Start
<b>ARGUE</b>	Tier A	⓪ Start	⓪ Start	⓪ Start	⓪ Start	⓪ Start	⓪ Start
	Tier B/C		⓪ Start	⓪ Start	⓪ Start	⓪ Start	⓪ Start

## AI AUTO-SCORING FOR SPEAKING AND WRITING

- Years of intensive research and development and the analysis of thousands of actual teacher-rated English learner recordings and constructed response writing items
- Dynamically evaluates 112 linguistic speaking dimensions
- Rates student recordings (though by using artificial intelligence (AI))

Level	Discourse Level/Linguistic Complexity	Level/Orms	Word/Phrase Level/Vocabulary Usage	Score	
6 Reaching	Response is fully comprehensible, fluent, and appropriate to purpose, situation and audience; comparable to the speech of English proficient students meeting college- and career-readiness standards; characterized by: <ul style="list-style-type: none"> <li>• Sustained, connected oral language characterized by confidence, coherence, and precision in the expression of ideas tailored to purpose, situation, and audience</li> <li>• Clear evidence of consistency in conveying an appropriate perspective and register</li> </ul>				
5 Bridging	Response is comprehensive, fluent, and generally related to purpose; generally comparable to the speech of English proficient peers; characterized by: <ul style="list-style-type: none"> <li>• Sustained, connected oral language that shows appropriate and coherent expression of ideas related to purpose, situation and audience</li> <li>• Clear evidence of conveying an appropriate perspective and register</li> </ul>				
4 Expanding	Response is generally comprehensible, fluent, and related to purpose; characterized by: <ul style="list-style-type: none"> <li>• Connected oral language that supports the expression of expanded or related ideas through emerging coherence, detail, and clarity</li> <li>• Some evidence of conveying an appropriate perspective and register</li> </ul>				
3 Developing	Response is generally comprehensible (though comprehensibility and fluency may from time to time be compromised in more complex speech); characterized by: <ul style="list-style-type: none"> <li>• Oral language that shows the development of connected language in the expression of an expanded idea or multiple related ideas</li> <li>• Evidence of a developing sense of perspective and register</li> </ul>				
2 Emerging	Response is generally comprehensible (though comprehensibility and fluency may often be compromised in more complex speech); characterized by: <ul style="list-style-type: none"> <li>• Oral language that shows the emerging expression of ideas; some attempt at connecting ideas may at times be evident</li> <li>• Some amount of language that may be repeated from the prompt</li> </ul>				
1 Entering	Response is generally comprehensible (though comprehensibility and fluency may be significantly compromised in language beyond words, oral phrases, or memorized chunks); characterized by: <ul style="list-style-type: none"> <li>• Words, oral phrases, or memorized chunks of oral language used to represent ideas</li> <li>• Varying amounts of language that may be repeated from the prompt</li> </ul>				
		Level 3 Developing			
		Level 2 Emerging			
		Level 1 Entering			
		Scores	5	3	4

Reference rubric criteria by hovering over the header

Teachers can edit AI scores

Teachers can record audio feedback

Leave typed comments

Teacher Comments:

Model exemplar recordings for all speaking items

Model Exemplar.  0:42 / 0:42



## SPEAKING EXAMPLE

### Learning a New Language



Learning a new language can be both a challenge and opportunity for students.

Sofia, what are two things you see in the picture?

Now it's your turn. What are two other things you see in the picture?



©Barefoot.com | Shutterstock

## WRITING EXAMPLE

### Double the Fun



Tell how Noora makes enough cookies for her cousins.

Noora wants to double her recipe to make 24 cookies.

Ingredients for 12 cookies		Ingredients for 24 cookies
2 cups sugar	X 2	4 cups sugar
3 cups oats	X 2	6 cups oats
1 cup peanut butter	X 2	2 cups peanut butter.



## PRONUNCIATION PERFECTOR™ AI

Real-time corrective feedback on pronunciation of English words.

Word Pronunciation Perfector™

autumn

Listening...  
Click to Stop!

Students practice saying words into the microphone...

Word Pronunciation Perfector™

autumn

CORRECT! autumn

...then the algorithm analyzes their pronunciation.

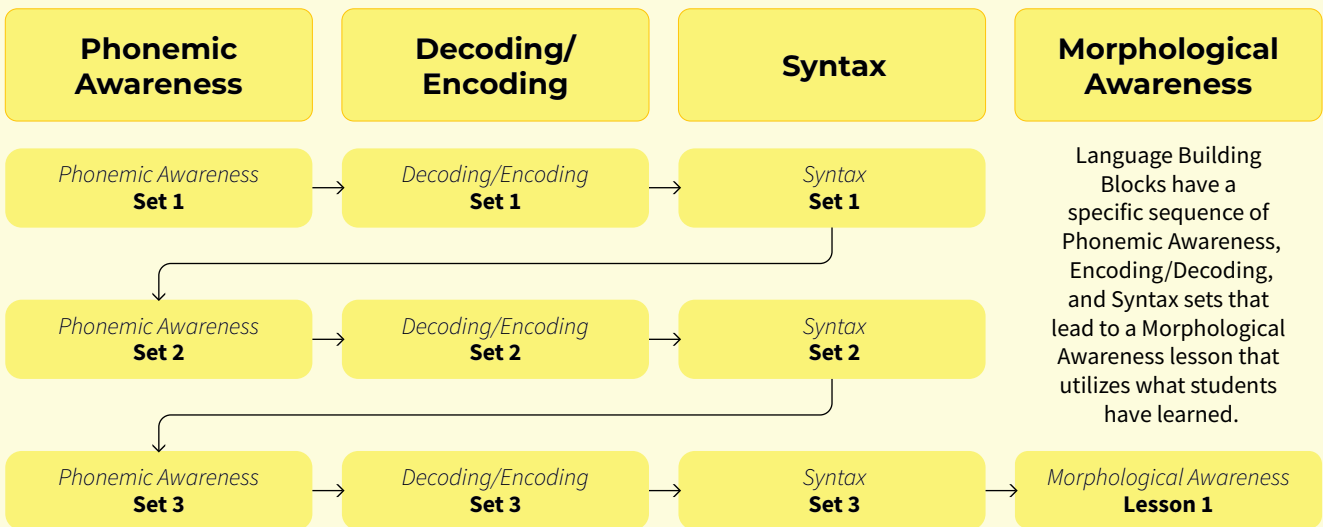
# LANGUAGE FOUNDATIONAL SKILLS CREATED THROUGH A MULTILINGUAL LENS

Based on the Science of Reading for Multilingual Learners, C2L employs an asset-based instructional design, offering MLLs ample chances to listen, read, speak, and write at their current language development levels while gradually increasing the linguistic complexity of the academic language they read and hear, and are expected to speak and write.

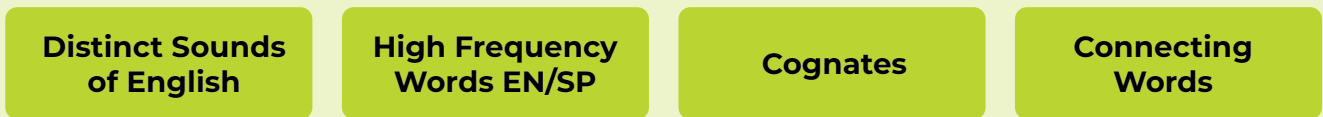
Using a functional approach to language development, C2L focuses on the purposeful use of language. A comprehensive instructional approach connects the language and code-based skills necessary to build upon MLLs broad language-based skills and related knowledge.

## FROM NEWCOMER LEVEL

### LANGUAGE BUILDING BLOCKS



### TRANSFER SKILLS



### VOCABULARY



### ADVANCED VOCABULARY

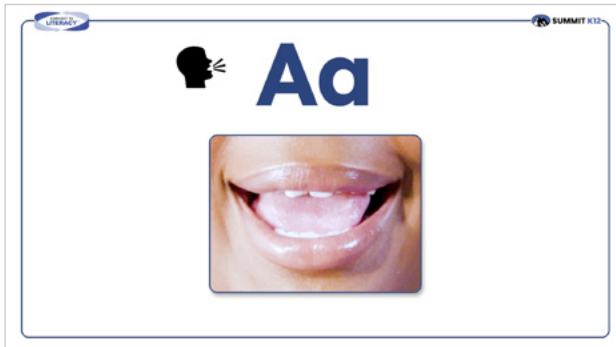


## TO SUPERPOWER LEVEL

## LANGUAGE BUILDING BLOCKS

Consisting of Phonemic Awareness, Encoding/Decoding, Syntax, and Morphological Awareness, Language Building Blocks address newcomer needs using a linguistic phonics approach.

### Video example from Phonemic Awareness: Short Aa



First, students are introduced to the phoneme and shown the articulatory gestures.



Next, students are instructed to practice making the sound and sense how making the sound feels.



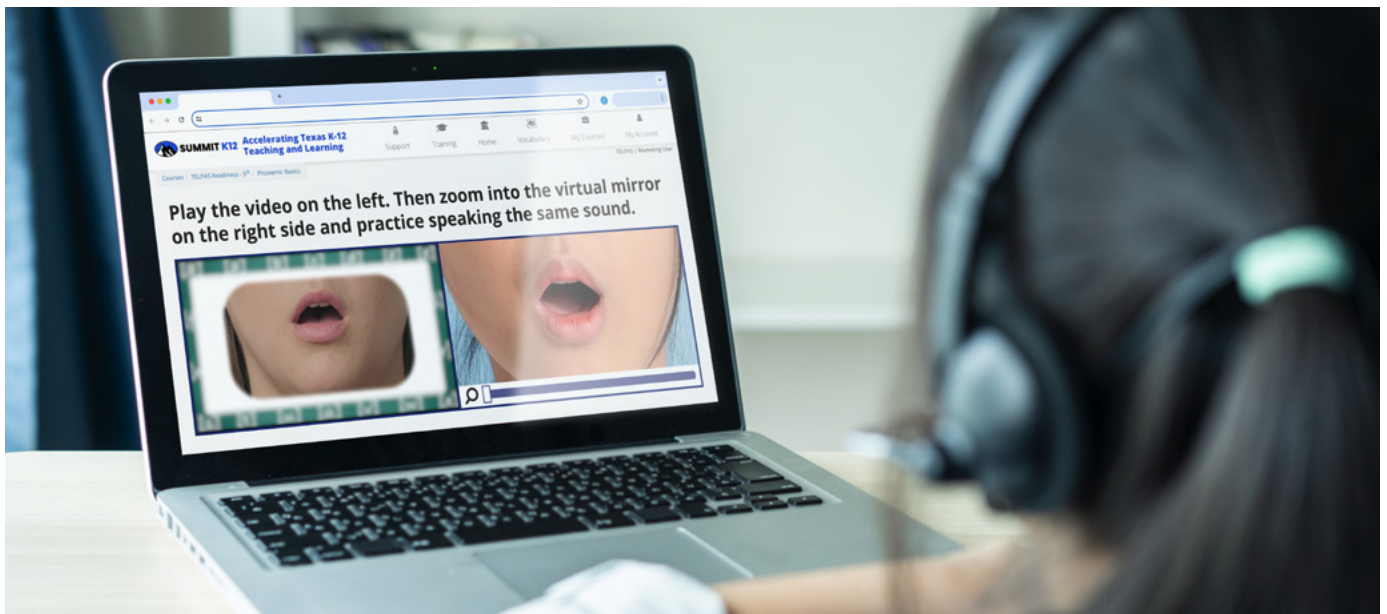
After being shown a visual of a practice word, students practice segmenting and blending.



Next, the practice word is given additional context through an image and a full sentence.

## VIRTUAL MIRROR

Using the Virtual Mirror, students can practice articulatory gestures by first watching an example video and then using their webcam to zoom in on their mouth and repeat the gesture.



# REAL-TIME, DATA-RICH REPORTS

Alongside the PLPs, C2L provides 40+ reports useful to both teachers and administrators. Whether you need a high-level view of an entire district or detail on a single student, C2L has you covered.

## REPORTS FOR TEACHERS

Reports provide teachers with real-time insights into students’ ongoing language growth. At-a-glance, see which proficiency level students are at, then drill down to learn in which areas students need additional practice and support.

### PLD GROUPING REPORT

See how your class falls into each Proficiency Level from one report.

Entering (1-1.99)		Emerging (2-2.99)		Developing (3-3.99)		Expanding (4-4.99)		Bridging (5-5.99)		Reaching (6)	
1 Student (12%)		3 Students (38%)		1 Student (12%)		1 Student (12%)		2 Students (25%)		0 Students (0%)	
Student	Score	Student	Score	Student	Score	Student	Score	Student	Score	Student	Score
Anna Zeretsky	1.53	Devon Robicheaux	2.88	Eli Portillo	3.49	Juan Rodriguez	4.29	Priyanka Shah	5.43		
		Raji Patel	2.85					Estefania Gonzalez	5.23		
		Damien Dominguez	2.12								

### INTERPRETIVE MODE PROGRESS REPORT

After ELD benchmark assessments are taken, track PLP progression of the entire class.

Student Name	BOY		PLP #1					MOY		PLP #2					EOY		PLP #3					
	L	R	B1	B2	L	R	WS	L	R	B1	B2	L	R	WS	L	R	B1	B2	L	R	WS	
Priyanka Shah	4.8	5.0	✓	✓	✓			5.1	5.5	✓	✓	✓										
Estefania Salaiz Gonzalez	5.3	4.5	✓	✓	✓	✓	✓	5.8	5.3	✓	✓	✓	✓	✓								
Raji Patel	1.9	2.1	✓	✓	✓			3.2	2.5	✓	✓	✓										
Juan Rodriguez	5.1	5.5	✓	✓	✓	✓		4.8	5.6	✓	✓	✓	✓									
Anna Zeretsky																						
Devon Robicheaux	3.3	3.0	✓																			

### EXPRESSIVE MODE PROGRESS REPORT

After ELD benchmark assessments are taken, track PLP progression of the entire class.

Student Name	BOY		PLP #1				MOY		PLP #2				EOY		PLP #3				
	S	W	DP-S	S	W	LS	S	W	DP-S	S	W	LS	S	W	DP-S	S	W	LS	
Priyanka Shah	4.8	5.0	✓	✓	✓		5.1	5.5	✓	✓	✓								
Estefania Salaiz Gonzalez	5.3	4.5	✓	✓	✓	✓	5.8	5.3	✓	✓	✓	✓							
Raji Patel	1.9	2.1	✓	✓	✓		3.2	2.5	✓	✓	✓								
Juan Rodriguez	5.1	5.5	✓	✓	✓	✓	4.8	5.6	✓	✓	✓	✓							
Anna Zeretsky																			
Devon Robicheaux	3.3	3.0	✓																

# COMPREHENSIVE KEY USE SUMMARY

See how students are doing in the 4 key uses across the 5 ELD Standards.

Student Name	Narrate					Inform					Explain					Argue				
	1	2	3	4	5	1	2	3	4	5	1	2	3	4	5	1	2	3	4	5
Priyanka Shah	4.5	4.8	5.06				4.5		5.1	5.4		6	5.4	5.5		4.5	4.8			5.6
Estefania Salaiz Gonzalez		6	5.3		5.81	4.5	4.4	5.2		6	5.2		5.3			6	4.5	3.6	4.5	
Raji Patel	1.5	2.1		3.2			1.5	2.1	2.4		3	3.1		3.5				1.5	1.9	2.2
Juan Rodriguez	3	5.15	4.83				3		5.5	5.6		1.5	2.2	3.1		3	3.2	3.3		
Anna Zeretsky	2.2					2.1					1.5					2.2				
Devon Robicheaux			3	3.2		2.9							3.6			1.6				

# CLASS FREQUENCY REPORT

SUMMIT K12		WIDA™ Mastery ELD for MLLs ELD Progress Monitoring Assessment: Pre-test		District: Boston Public Schools School: Lamar Elementary Grade: 03												
Class Frequency Report																
Proficiency Level	Listening		Speaking		Reading		Writing		Oral Language		Literacy		Comprehension		Overall Score	
	# of Students at Level	% of Total Tested	# of Students at Level	% of Total Tested	# of Students at Level	% of Total Tested	# of Students at Level	% of Total Tested	# of Students at Level	% of Total Tested	# of Students at Level	% of Total Tested	# of Students at Level	% of Total Tested	# of Students at Level	% of Total Tested
1 - Entering	25	25%	25	25%	25	25%	25	25%	25	25%	25	25%	25	25%	25	25%
2 - Emerging	25	25%	25	25%	25	25%	25	25%	25	25%	25	25%	25	25%	25	25%
3 - Developing	20	20%	20	20%	20	20%	20	20%	20	20%	20	20%	20	20%	20	20%
4 - Expanding	20	20%	20	20%	20	20%	20	20%	20	20%	20	20%	20	20%	20	20%
5 - Bridging	5	5%	5	5%	5	5%	5	5%	5	5%	5	5%	5	5%	5	5%
6 - Reaching	5	5%	5	5%	5	5%	5	5%	5	5%	5	5%	5	5%	5	5%
<b>Total Tested</b>	100		100		100		100									
<b>Total Enrolled</b>	100		100		100		100									
<b>% Tested</b>	100%		100%		100%		100%									

Oral Language = 50% Listening + 50% Speaking  
 Literacy = 50% Reading + 50% Writing  
 Comprehension = 70% Reading + 30% Listening  
 Overall Score = 35% Reading + 35% Writing + 15% Listening + 15% Speaking

# STUDENT ROSTER REPORT


SUMMIT K12		WIDA™ Mastery ELD for MLLs ELD Student Roster Report: Pre-test		District: Boston Public Schools School: Lamar Elementary Grade: 03													
Student Roster Report																	
Proficiency Level	Cluster	Listening		Speaking		Reading		Writing		Oral Language		Literacy		Comprehension		Overall Score	
		Score	PLD	Score	PLD	Score	PLD	Score	PLD	Score	PLD	Score	PLD	Score	PLD	Score	PLD
Anna Zeretsky 1632949	2-3	1.5	Entering	1.5	Entering	1.5	Entering	1.5	Entering	1.5	Entering	1.5	Entering	1.5	Entering	1.5	Entering
Devon Robicheaux 1090078	2-3	2.5	Emerging	2.5	Emerging	2.5	Emerging	2.5	Emerging	2.5	Emerging	2.5	Emerging	2.5	Emerging	2.5	Emerging
Raji Patel 2352481	2-3	3.5	Developing	3.5	Developing	3.5	Developing	3.5	Developing	3.5	Developing	3.5	Developing	3.5	Developing	3.5	Developing
Juan Rodriguez 2090178	2-3	4.5	Expanding	4.5	Expanding	4.5	Expanding	4.5	Expanding	4.5	Expanding	4.5	Expanding	4.5	Expanding	4.5	Expanding
Estefania Salaiz Gonzalez 1271611	2-3	5.5	Bridging	5.5	Bridging	5.5	Bridging	5.5	Bridging	5.5	Bridging	5.5	Bridging	5.5	Bridging	5.5	Bridging
Priyanka Shah 1867679	2-3	6	Reaching	6	Reaching	6	Reaching	6	Reaching	6	Reaching	6	Reaching	6	Reaching	6	Reaching

Oral Language = 50% Listening + 50% Speaking  
 Literacy = 50% Reading + 50% Writing  
 Comprehension = 70% Reading + 30% Listening  
 Overall Score = 35% Reading + 35% Writing + 15% Listening + 15% Speaking  
 Overall Scores are computed when all 4 domains have been completed

# NEWCOMER RESOURCES AND SUPPORTS

## 30+ L1 HOME LANGUAGE ELD SUPPORT

- Written and audio directions throughout the C2L course for Newcomers
- Student C2L course overviews
- Student ELD reports for parents
- Parent letters explaining the C2L course

<p>▶ Đầu tiên, nhấn vào mũi tên để lắng nghe đoạn âm thanh. Sau đó, khi bạn sẵn sàng, hãy nhấn nút ghi âm màu đỏ và hoàn tất ghi âm bằng cách lặp lại đoạn âm thanh trên</p>	Vietnamese	Amharic
<p>▶ 首先, 请按播放键聆听录音。然后, 当您准备好, 请按红色录音按钮录下刚刚听到的内容。</p>	Chinese (Simplified)	Arabic
<p>▶ सबसे पहले प्ले बटन दबाएं और ऑडियो सुनें। फिर, जब आप तैयार हों, तो लाल रिकॉर्ड बटन दबाएं और उसी वाक्य को दोहराते हुए स्वयं को रिकॉर्ड करें।</p>	Hindi	Armenian
<p>▶ 먼저 재생 버튼을 누르고 오디오를 들어보세요. 그 후, 준비가 되면 빨간색 녹음 버튼을 누르고 오디오와 동일한 말을 반복하세요.</p>	Korean	Bengali
<p>▶ Primero, presiona el botón de reproducción y escucha el audio. Luego, cuando estés listo(a), presiona el botón rojo para grabar y grábate repitiendo la misma oración.</p>	Spanish	Chinese (Simplified)
<p>▶ Спочатку натисни кнопку відтворення та прослухай аудіо. Потім, коли будеш готовий/готова, натисни червону кнопку запису та запиши себе, повторюючи те саме ствердження.</p>	Ukrainian	Chinese (Traditional)
<p>▶ First press the play button and listen to the audio. Then, when you are ready, press the record button and record yourself repeating the same statement.</p>  <p>▶ 0:00 / 0:03</p>	English	Dari
		Filipino (Tagalog)
		French
		German
		Haitain Creole
		Hindi
		Hmong
		Ilocano
		Japanese
		Korean
		Myanmar (Burmese)
		Nepali
		Pashto
		Persian (Farsi)
		Polish
		Portuguese
		Quechua
		Russian
		Somali
		Spanish
		Swahili
		Ukrainian
		Urdu
		Vietnamese

# STUDENT ELD PROGRESS REPORTS

C2L provides printable Student ELD Progress reports. These reports include a key, available in both English and 30+ home languages to help parents and guardians understand where their children are in their English language acquisition.



## English Language Development (ELD) Progress Report



<b>Student:</b> Priyanka Shah	<b>Student #:</b> 71920	<b>Date:</b> 11/4/24
<b>Summit K12 Username:</b> priyanka.shah@schooldistrict.net	<b>School:</b> James Monroe Elementary	

### English Language Development (ELD) Progress Monitoring Assessments

ELD Assessment	Test Date	Listening	Speaking	Reading	Writing	Composite	PLD
Pre-Test	9/10/23	3.8	2.8	2.2	1.4	2.5	Emerging
Interim Test	10/30/23	4.2	3.1	3.4	2.2	3.2	Developing
Summative Test	TBD						

### English Language Development (ELD) Year to Date (YTD) Summary

Course Section	Last Login	Listening	Speaking	Reading	Writing	Composite	PLD
Weekly Practice Sets	11/4/23	4.1	3.3	3.7	2.2	3.3	Developing

### Summit K12 Connect to Literacy Usage Summary

# Login YTD	160	# Minutes YTD	1,986
-------------	-----	---------------	-------

Course Component	# Activities	Course Component	# Activities
BASICS Present Tense	35	ELD Listening	22
BASICS Past-Future Tense	23	ELD Speaking	16
Differentiated Practice Listening	19	ELD Reading	28
Differentiated Practice Speaking	15	ELD Writing	12
Editing/Grammar Skills	17	Language Foundational Skills	46

Parent/Guardian Acknowledgement	Parent/Guardian Name	Date
_____	_____	_____
Teacher Acknowledgement	Teacher Name	Date
_____	_____	_____

# STUDENT DASHBOARDS

- Intuitive interface for all grade levels
- Multiple avenues to monitor progress throughout the year

## MY PLP TAB

## MY ASSIGNMENTS TAB

[Filter](#) [Multiple View Styles](#) [Search Function](#)

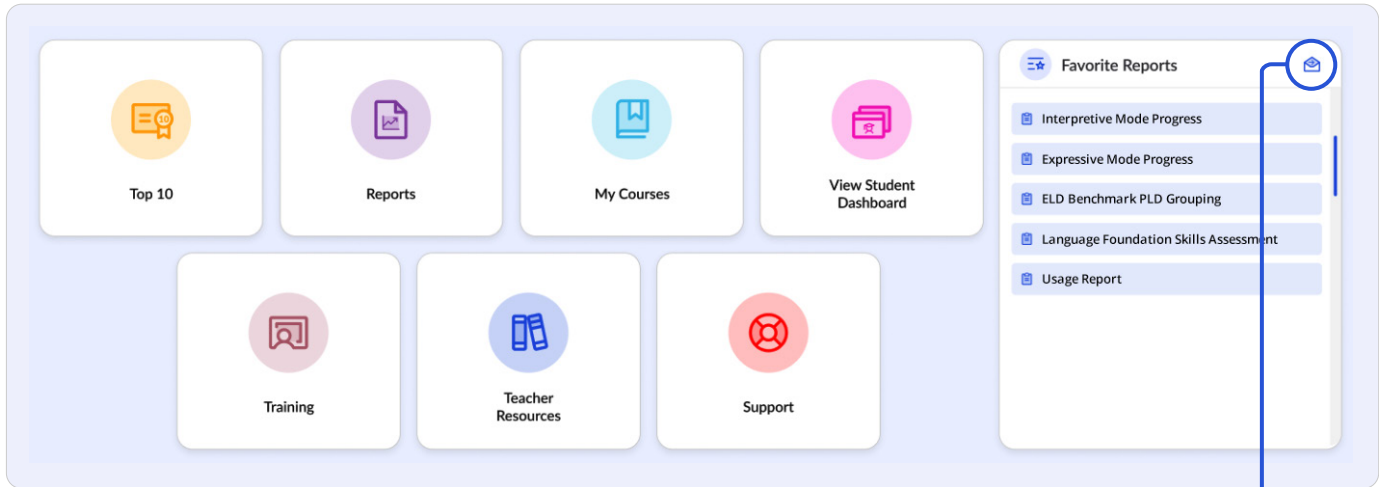
[Assignment Status](#) [Due Date](#)

## MY PROGRESS TAB

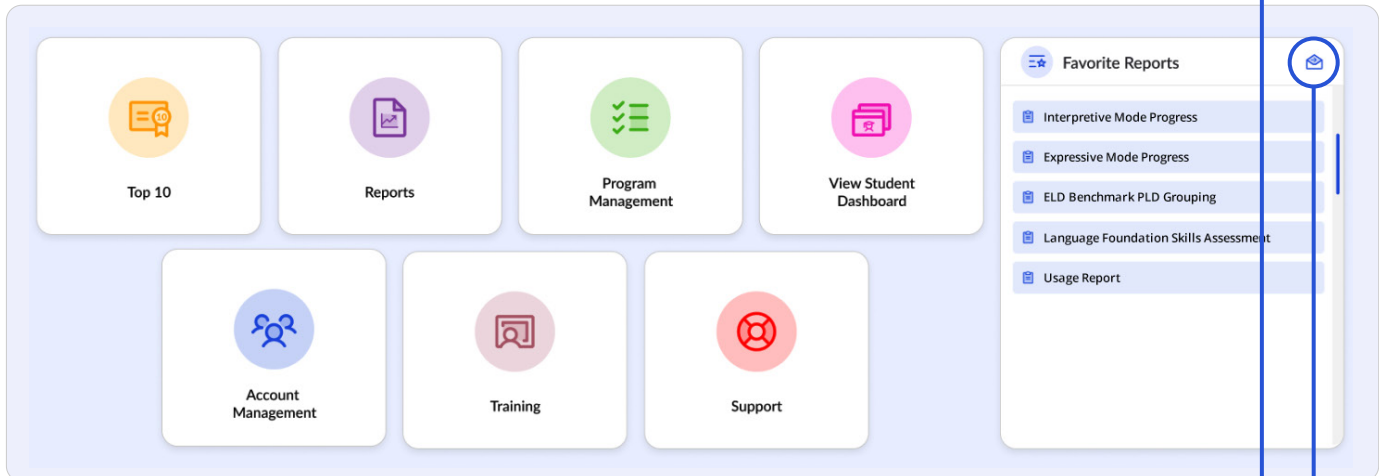


# TEACHER AND ADMIN DASHBOARDS

## TEACHER DASHBOARD



## ADMIN DASHBOARD



- Central hub for teachers and admins
- Quickly access commonly used resources
- Add reports to your favorites and set up email subscriptions

### Email Subscription for Reports

Select Report

- Interpretive Mode Progress
- Expressive Mode Progress
- ELD Benchmark PLD Grouping
- Language Foundation Skills Assessment
- ELD Benchmark Scores Comparison Report
- Personalized Learning Plan Progress Report
- Weekly Usage Report
- Student ELD Reports

Subscription Settings

Report Subscription Name:

Set Frequency:  
Weekly  Monday, We...

Set Time:

Email:

Set File Format:

# PROFESSIONAL LEARNING FOR EDUCATORS, LEADERS, AND FAMILIES OF MULTILINGUAL LEARNERS

Our professional learning offerings are designed with a deep understanding of the diverse needs and challenges districts face during any curricular implementation. We offer different packages and sessions including:

- Initial training for teachers and school leaders on how to utilize Connect to Literacy (C2L) to support student learning
- Coaching and feedback for teachers focused on effective use of C2L
- Coaching and feedback for leaders on the enabling conditions and resources needed for a successful implementation of C2L

## GUIDING PRINCIPLES FOR OUR PROFESSIONAL LEARNING

<p><b>FLEXIBLE</b></p> <hr style="border: 0; border-top: 1px solid white; margin: 5px 0;"/> <p>Our team offers professional development in a variety of formats for a variety of audiences.</p> <p>The options include synchronous training (either onsite or online) along with built-in asynchronous supports.</p>	<p><b>CONTEXTUALIZED</b></p> <hr style="border: 0; border-top: 1px solid white; margin: 5px 0;"/> <p>Our team delivers a tailored approach that aligns seamlessly with your district's unique context, ensuring that our support addresses your specific professional learning goals and priorities.</p>	<p><b>ACTIONABLE</b></p> <hr style="border: 0; border-top: 1px solid white; margin: 5px 0;"/> <p>Your success is our success.</p> <p>Our team encourages action and nurtures a collaborative partnership that builds capacity and fosters sustained growth and success.</p>
--	--	---

## CUSTOMIZABLE PACKAGES



**GOLD PACKAGE**



**SILVER PACKAGE**



**BRONZE PACKAGE**

	 GOLD PACKAGE	 SILVER PACKAGE	 BRONZE PACKAGE
Available online or onsite	✓	✓	✓
Teacher training	✓	✓	✓
Monthly office hours	✓	✓	✓
Asynchronous courses	✓	✓	✓
Leadership planning	✓	✓	✓
Leadership check-ins	✓	✓	
Leadership professional learning	✓		
Training the trainer	✓		

## CUSTOMER SUPPORT

The Summit K12 customer support team provides all onboarding and continued support to teachers and administrators throughout the full school year. We proudly hire former K-12 classroom teachers who know first-hand what it's like to implement software solutions in the classroom.

With over 40 collective years in the classroom, our team has the experience to help teachers and administrators through phone and email support.



## CUSTOMER TESTIMONIALS



*The support team at SK12 is amazing! They answer questions quickly and are very professional. It is always a pleasure to work with them.*



*Quick and efficient. Even sent a video to help me go through the steps to access the reports I needed. Very helpful and kind.*



## ABOUT SUMMIT K12'S LEARNING MANAGEMENT SYSTEM

### SINGLE SIGN-ON (SSO)

Single sign-on for Summit K12 platforms plus SSO support for all major LMS and SIS platforms with SAML or oAuth.

- ClassLink
- Clever
- Rapid Identity

### LMS INTEGRATION

Support for all major LMS and SIS platforms including:

- Google Classroom
- Canvas
- Skyward
- Schoology

### CLASS ROSTERING AND SECURE NIGHTLY SYNCH

- OneRoster™ Rostering Protocol
- Clever
- Classlink
- Encrypted CSV

### OPERATING SYSTEMS AND COMPATABILITY

Accessible on all major devices: PCs, Chromebooks, Macs, and iPads.

HTML 5 compatible and WCAG 2.0 compliant.

### SECURITY AND PRIVACY

End-to-end encryption for all district connections.



# SUMMIT K12'S PARTNERSHIP PHILOSOPHY

## YEAR-ROUND SUPPORT FOR SUCCESS

Summit K12 is dedicated to making sure you and your students find success long-term. To this end, we provide a number of resources available year-round so you can make the most of what C2L has to offer including:

- Teacher and family engagement Workshops  
*(available in English and Spanish)*
- Parent letters in 30+ languages to explain C2L
- Family access logins for family members to learn English at their own pace
- Customized, year-round professional development
- Dedicated customer support team
- Online help center
- Money back guarantee that all MLL students will gain at least one proficiency level per year!\*

\*For full details visit [summitk12.com/guarantee-information](https://summitk12.com/guarantee-information)

**SUMMITK12.COM/WIDA**

**844.331.4737**

**SUPPORT@SUMMITK12.COM**